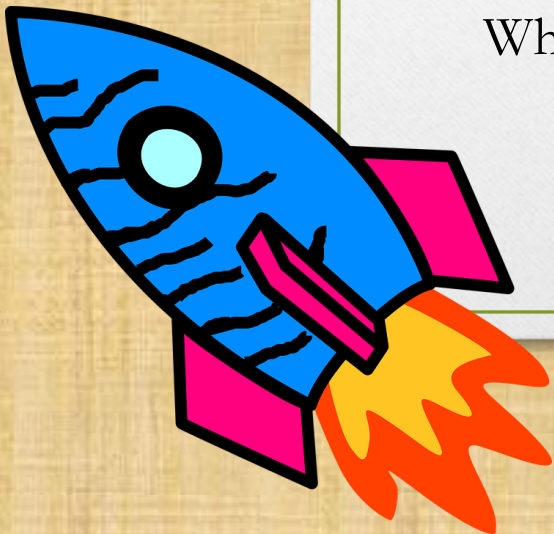
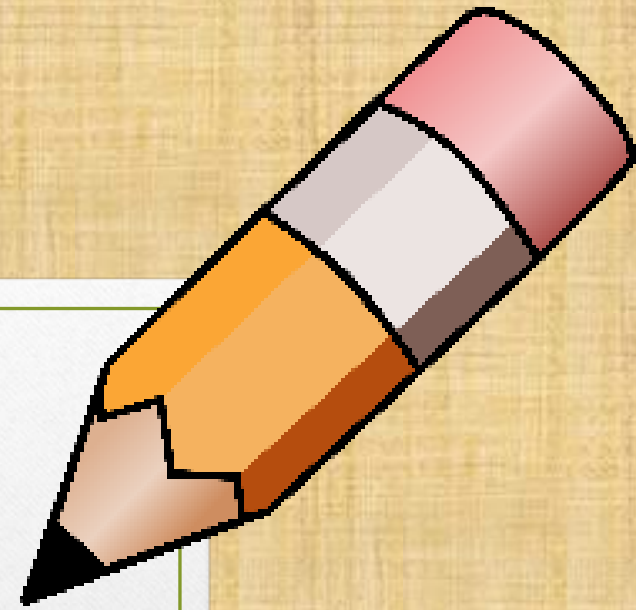


Welcome to Reception

Bushey Heath Primary School

When you join Reception in September you come to school
between 8:45 -8.55am.



When you arrive at school you will say goodbye to your grown up at the reception class door, and enter the classroom.



This is the door to enter your classroom, Your teacher will be waiting for you!



When you enter your classroom you will see your teachers:



Mrs Sutherland
Early Years Lead/Class Teacher



Miss Allett
SENCO



Miss C
Teaching Assistant



Miss Cross
Teaching Assistant

When you come into the classroom you will hang your coat and PE kit on your peg.



There will be a special trolley for you to put your water bottle



Your book bag will go into your tray with your name on it.

You will be given a carpet space. You will sit here when we have carpet time.



There are two toilets in our classroom and you can use either of them.



We have two sinks for you to wash your hands.

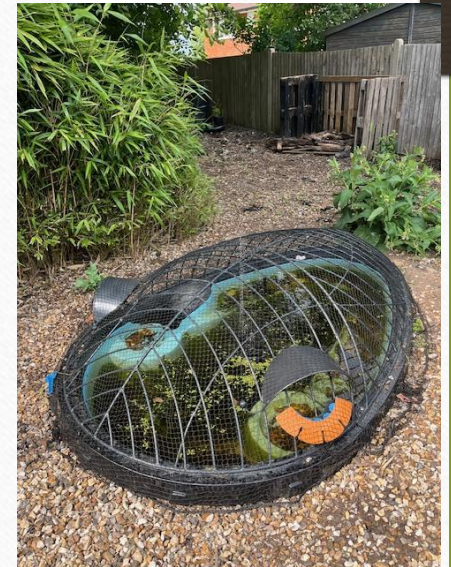


Here are some photos of our classroom. It may look a bit different to this when you start in September.



Here are some photos of our outdoor area.

Don't forget to
bring your
wellies to school.



This is the dining room. It is where we come to eat our lunch.



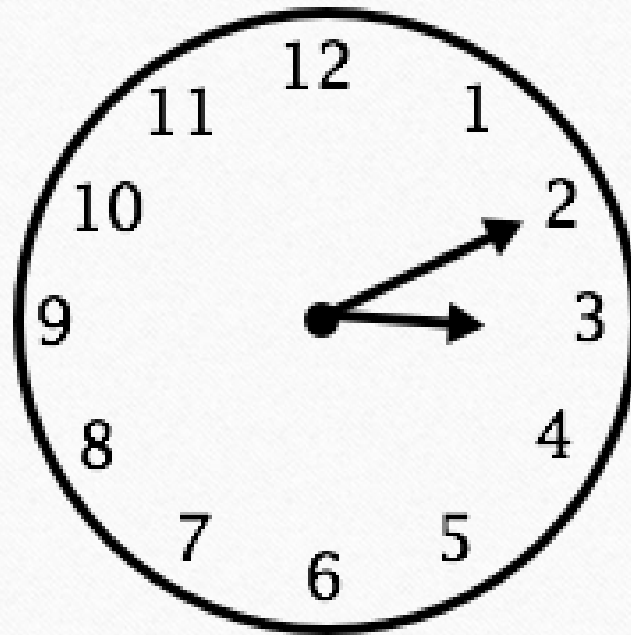
This is the school hall. We will use this room for PE and Assemblies.



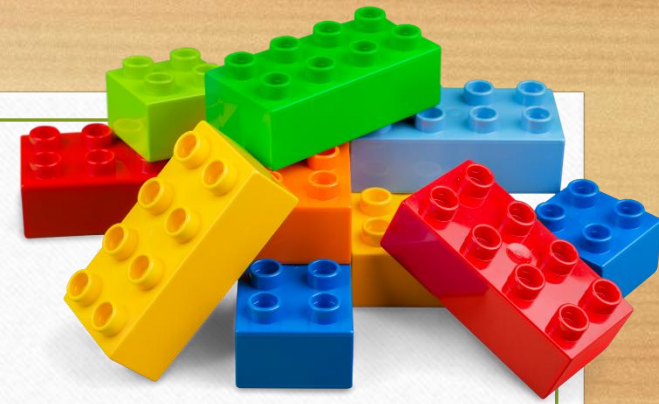
This is the infant playground. We will play here for our morning break and lunch break.



The school day finishes at 3:10pm. Your adult will come and wait on the playground outside our reception class door.



If you are going to an after school club an adult from the club will come and collect you from the classroom.



We can't wait to welcome you to
Reception in September!

Have a fantastic summer!

